



PRO SHORE

Shoring Equipment
Rev. 2



0845 003 89 84
www.proshore.co.uk



About Pro Shore

Pro Shore was founded in 2007 as a realistic alternative to using larger national companies. We provide excavation support safety equipment throughout the UK. We can and have supplied further afield when required. Although we are independent, we have a wealth of experienced staff. This knowledge is invaluable when dealing with our customers.

The business was set up with the customer in mind & all of our processes have been simplified, especially the paperwork process. We have provided an example of this within this brochure. The invoicing is extremely clear, removing confusion and added time spent processing paperwork. We continually invest in new products, expanding our current stock and look towards products to innovate the industry.



Wide range of shoring equipment

At Pro Shore, we have a comprehensive product range, from lightweight trench and manhole boxes through to hydraulic frames and trench sheets. We offer a “one stop shop” for the supply of equipment to the civil engineering / pipe laying sector of the construction market.

Contents

About us	2
Why Pro Shore	
Our Commitments & Temporary Works Design	4
Committed To Health & Safety, Proven Track Record	5
Our products	
i600 Frames	6
Manhole Brace Frames	8
Ladders, Edge Protection & Ladder Access Platform	9
Davit Arm System	10
Waler End Bearer	11
Trench Struts	12
Trench Sheets & Larssen Piles	13
Trench Sheet Driving Cap, Extractor Clamp, Quick Release Shackles, Lifting Chains	14
Trench Boxes	15
Manhole Boxes	17
Manhole Shutters	19
Utility Boxes	20
Drag Boxes	21
Pipe Stoppers	25
Stop End Panels	26
Road Forms	27
Pipe Lifter	28
Pipe Pusher	29
Manhole Ring Lifter	30
Culvert Puller	31
Road Plates	32
Our Locations	33
Paperwork Process	34

Our Commitments

At Pro Shore we are committed to offering the best quality service at very competitive prices. Knowing how the construction industry operates, we adopt a truly flexible approach to equipment hire, but still boast an outstanding record for delivering on time.

- Very competitive hire rates
- Excellent range of shoring equipment
- Short or long term hire deals
- Experienced & knowledgeable staff
- Fast turnaround on shoring equipment hire
- Flexible hire terms
- Short notice delivery & pick up
- Realistic approach to equipment damage
- Maintain the highest standards of Health & Safety



Committed to Health & Safety

Pro Shore are committed to maintaining the highest standards of health and safety throughout our work processes. From internal processes through to the delivery of shoring equipment on site, we operate a strict code of conduct.

All staff are given training on our health and safety procedures and have access to our health and safety manual at all times. We regularly undertake checks to ensure that our health and safety procedures are being adhered to and to identify better ways of improving our working practices.

Upon ordering any piece of shoring or ancillary equipment from Pro Shore, a

user guide will be issued describing the recommended assembly, installation and extraction instructions for that specific piece of equipment. To ensure health and safety standards are maintained, these instructions must be read and adhered to.

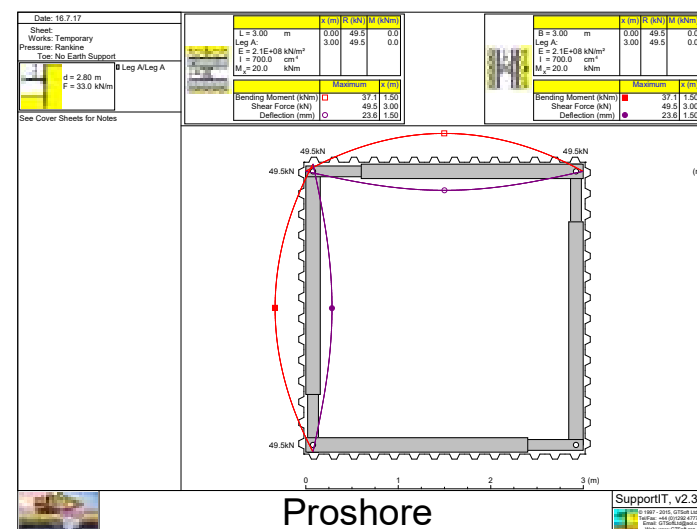
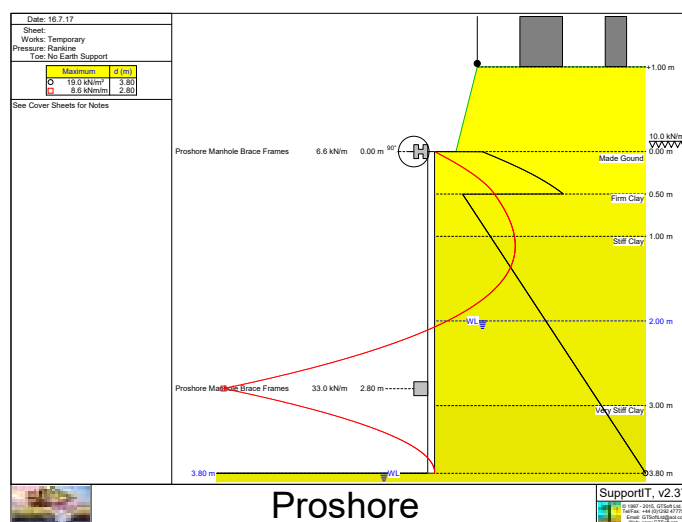
Whilst on site, Pro Shore are happy to adhere to and accommodate our clients specific health and safety procedures. These will

be required before arriving on site with a delivery.

Our shoring equipment hire terms are underpinned by the CPA's terms and conditions, titled 'model conditions for the hiring of plant' (July 2011)

Temporary Works Designs

Simple and complex temporary works designs can be provided. Working with clients we offer an initial **FREE** temporary works design. With the ability to turn around a quick design without compromising safety. Speak to one of our Sales Engineers if you require this service.



Proven Track Record

As a result of continuous investment into developing and growing our range of trench equipment products, Pro Shore has quickly become the preferred choice for many leading civil engineering companies. Our success is best demonstrated by our growing number of clients, including:

ALMOND CIVILS LTD
CIVIL ENGINEERING CONTRACTORS

ATB
CIVIL ENGINEERING LTD

R.J. HOWARD ENGINEERS LTD.
CIVIL ENGINEERING CONTRACTORS

ESH
CONSTRUCTION

CRS
PLANT LTD



We are committed to providing high quality health & Safety

i600 Frames

The i600 system is intended to be used as a temporary waling system to sheeted excavations. It incorporates a hydraulic system of adjustment which is designed to extend or retract the frames under conditions of no or low loading:

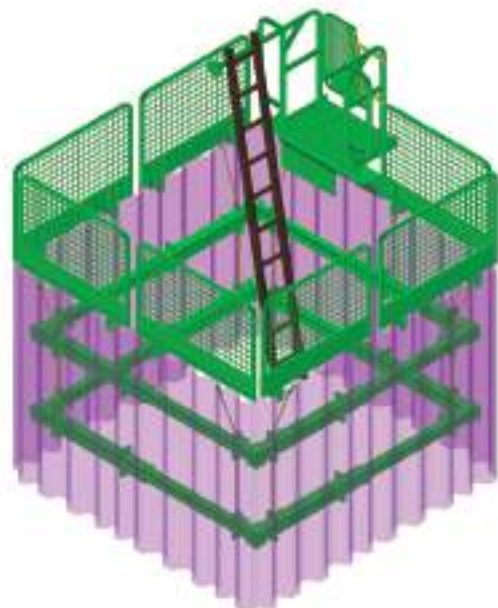
Size (square) (Sheet-to-sheet)	Configuration	Maximum Square Size (Sheet-to-sheet)	Leg Weight
2.6m to 3.6m	Ram Unit Only	3.6m	921kg
3.6m to 4.6m	Ram Unit + 1.0m Ext	4.6m	1301kg
4.6m to 5.6m	Ram Unit + 1.0m Ext + 1.0m Ext	5.6m	1681kg
5.1m to 6.1m	Ram Unit + 2.5m Ext	6.1m	2581kg
5.6m to 6.6m	Ram Unit + 1.0m Ext + 1.0m Ext + 1.0m Ext	6.6m	2061kg
6.1m to 7.1m	Ram Unit + 2.5m Ext + 1.0m Ext	7.1m	1961kg
7.1m to 8.1m	Ram Unit + 2.5m Ext + 1.0m Ext + 1.0m Ext	8.1m	2341kg
7.6m to 8.6m	Ram Unit + 2.5m Ext + 2.5m Ext	8.6m	2241kg
8.6m to 9.6m	Ram Unit + 6.0m Ext	9.6m	2191kg
9.6m to 10.6m	Ram Unit + 6.0m Ext + 1.0m Ext	10.6m	2571kg
10.6m to 11.6m	Ram Unit + 6.0m Ext + 1.0m Ext + 1.0m Ext	11.6m	2541kg
11.1m to 12.1m	Ram Unit + 6.0m Ext + 2.5m Ext	12.1m	2851kg
12.1m to 13.1m	Ram Unit + 6.0m Ext + 2.5m Ext + 1.0m Ext	13.1m	3231kg
13.6m to 14.6m	Ram Unit + 6.0m Ext + 2.5m Ext + 2.5m Ext	14.6m	4492kg
14.6m to 15.6m	Ram Unit + 6.0m Ext + 6.0m Ext	15.6m	3461kg



Manhole Brace Frames

The Pro Shore double acting manhole brace leg is designed to be used in four sided excavations both square and rectangular. This system can be utilised in many different applications and temporary works designs can be supplied if required. These frames can be also used back to back where a longer wider trench is required and a clear opening is not critical.

- Double Acting stroke allows hydraulic extension and retraction
- Proven robust design
- Lock off valve safety feature to prevent accidental depressurisation
- Dimensions on plan from 2.1mtrs to 7.1mtrs
- Very Easy to install



Leg Type	External Dimensions (mm)		Weight Per Leg (KG)	SWL (kN/m) Max Extension FOS = 1.6
	Minimum	Maximum		
A	2000	3000	260	79.7
B	3000	4000	305	49.9
C	4000	5000	390	29.5
D	5000	6000	445	19.8
E	6000	7000	630	19.8



Tuffsteel Ladder

- Available for Hire and Sale
- Available in 3m, 4m, 5m, 6m, 7m, 8m lengths
- Lightweight steel construction
- Certified to BS EN131 & tested to Class 1 strength criteria



Timber Pole Ladder

- Available for Sale Only
- Available in 3m, 4m, 5m, 6m lengths



Edge Protection

- Quick & Simple Installation
- Available in 2.6m & 1.3m long panels x 1.15m high
- 1.2m high posts
- Adjustable foot suits 0-175mm thick trench sheets/panel



Ladder Access Platform

- Quick & Simple Installation
- Suitable for use with both Trench Sheetting & all Pro-Shore Trench/Drag/Manhole Box panels
- Provides a safe means of access on to & egress from a ladder
- Ladder can be secured on either side of platform

Davit Arm System

Pro Shore davit arm recovery system is a bespoke light weight product designed for the safe retrieval of personnel from a trench or excavation in the case of an emergency. It can be used both on trench boxes and trench sheets with the adjustable barrel mount. The system is intended to be used for recovery purposes only (man riding winch) however it can be adapted to included a fall arrest system with prior notice.

- Simple Straight forward rescue system.
- Can be adapted to include a fall arrest system when required.
- Lightweight Aluminium construction for easy installation.
- Ideal for man-riding or retrieval in open excavations



Waler End Bearer

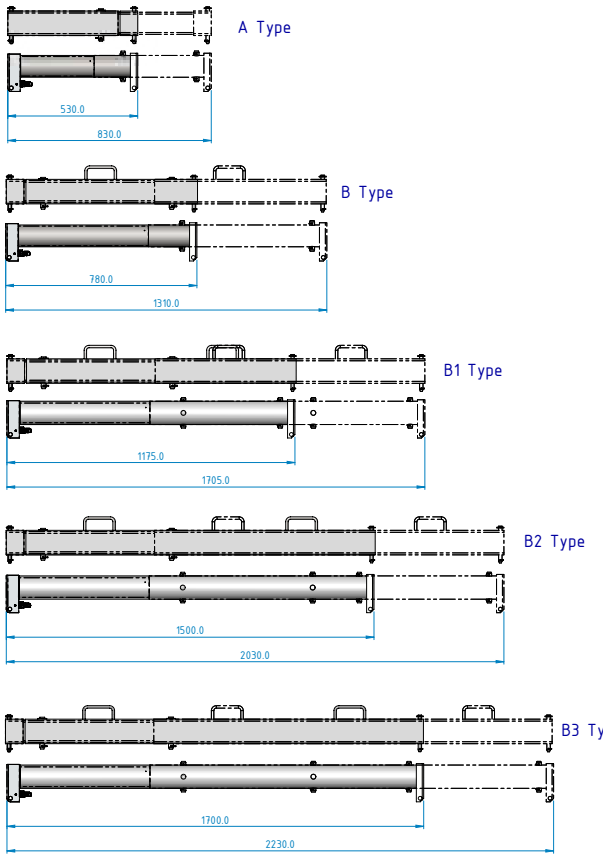
Waler End Bearers offer the ability for a closed sheet excavation extending the once two sided support system to a now four sided support system.

Pro Shore’s End Bearers are some of the sturdiest out there, and are very easy to install.

- Flexible in utility applications
- Lightweight for ease of handling
- Steel & Aluminium Rails Available
- Safety Lock off Valves

Rail Length (m)	Height (mm)	Width (mm)	Complete Frame Weight (kg)	Distance Between Struts (mm)	SWL (kN/m)
2000	180	120	65.0	1420	85.0
3000	180	120	85.0	2520	25.0
4000	180	120	105.0	3500	14.0

Ram Type	Hydraulic Range (mm)		Excavation Range (Sheet to sheet)=		Max Load (kN)
	Minimum	Maximum	Minimum	Maximum	
A	530	830	548	848	70
B	780	1310	798	1328	70
B1	1180	1710	1198	1728	70
B2	1500	2030	1518	2048	70
B3	1700	2230	1718	2248	70



Trench Struts

Trench Struts are designed to brace horizontal timber walings against trench sheeting.

- 75mm x 75mm clawed end plates
- 35 kN capacity
- Simple adjustment
- Available in 4 sizes
- Suitable for ‘utility work’ applications

Code	Minimum Height (m)	Maximum Height (m)	Weight (kg)	Safe Working Load (kN)
Size 0	0.30	0.48	5.1	35
Size 1	0.45	0.68	6.2	35
Size 2	0.68	1.06	8.4	35
Size 3	1.06	1.67	10.8	35

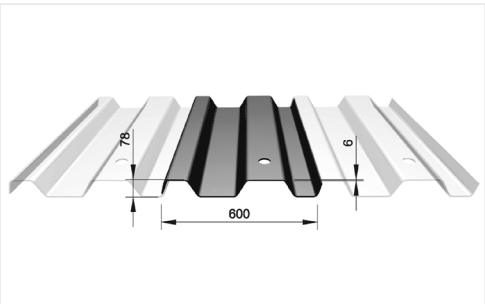


Trench Sheets

Trench sheets are available in a range of sections and lengths and are generally used to support the vertical faces of trenches and excavations, usually in conjunction with hydraulic walers or manhole brace frames.

- Slings hole in one end for ease of handling during installation and extraction
- Range of accessories available including driving caps, quick release shackles, extractor clamps
- Standard lap trench sheets available in 2m, 2.5m, 3m, 3.5m, 4m lengths
- KD4 heavy duty trench sheets available in 3m, 3.5m, 4m, 4.5m, 5m, 5.5m, 6m lengths
- KKD 600 sheets come in lengths of 4m, 5m, 6m, 7m and 8m

Sheet Type	Gauge (mm)	Depth (mm)	Effective Width (mm)	Weight (kg/linear metre)	Bending Capacity (kNm/m)
Standard Lap	3.4	35	330	10.8	8.5
KD4 Heavy Duty Lap	6	50	400	22.1	19
KKD 600/6	6	78	600	37.5	36.8



Larssen Piles

For when a heavy duty solution is required for deeper and larger excavations. Larssen Piles are available in a range of sections and lengths. We can cater for both temporary and permanent applications.



Trench Sheet Driving Cap

Universal driving cap - suits both Standard Lap & KD4 trench sheets.
Protects end of trench sheet during installation process



Trench Sheet Extractor Clamp

The Trench Sheet Extractor Clamp is designed for the extraction of individual trench sheets from trenches / excavations.



Quick Release Shackle

The Quick Release Shackle is designed for pitching trench sheeting & piling – it is NOT intended to be used for the extraction of trench sheets (see Trench Sheet Extractor Clamp)



Lifting Chains

A range of lifting chains are available, both as 4 leg and single leg chains, to aid the safe handling of shoring equipment and other associated items.

- Simple to use
- Avoids damage to the trench sheet whilst installing sheets
- Removable pins for ease of replacement if damaged

- 2 tonne capacity model suitable for 3.5mm gauge trench sheeting
- 7 tonne capacity model suitable for 6mm gauge trench sheeting
- Full length screw pin for added safety

- Suitable for many different sections of trench sheeting & piling
- Quick release mechanism for ease of installation & removal
- 4 tonne safe working load

- 10mm x 4 metre x 4 leg chains
- 13mm x 5 metre x 4 leg chains
- 20mm x 1.5 metre single leg chains
- All 4 leg chains are fitted with self-locking hooks & shortening clutches
- All chains are fully certified and are inspected/tested after every hire

Trench Boxes

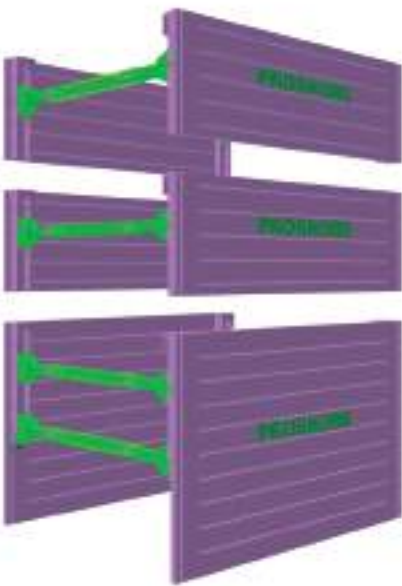
Standard Trench Box

The standard trench box provides a quick and effective method of ground support for trenches up to 5.5 metres deep. They are usually delivered to site “flat packed” ready for simple assembly on site.

- Telescopic Box Section Struts with pinned connections.
- Base Panel Size L x H : 3500mm x 2500mm
- Top Panel Size L x H : 3500mm x 1500mm
- Panel Thickness : 100mm
- Clear Length Between Struts : 3120mm
- Clearance Below Lower Strut. : 1500mm
- Maximum Lateral Earth Pressure : 40kN/m2

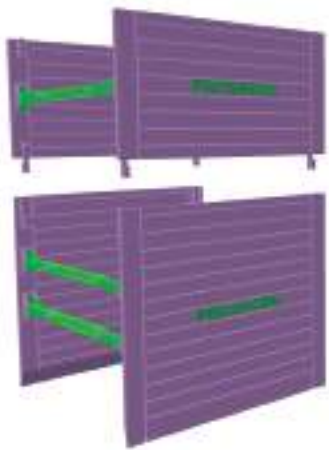


Internal Width (mm)	External Width (mm)	Base Box Weight (kg)	Top Extension Weight (kg)
600 - 800	800 - 1000	2210	1526
800 - 1200	1000 - 1400	2270	1556
1150 - 1850	1350 - 2050	2326	1584
1800 - 2500	2000 - 2700	2390	1616
2450 - 3150	2650 - 3350	2454	1648



Mini Trench Box

The Mini Trench Box provides a quick and effective method of ground support for trenches up to 4.0 metres deep. They are usually delivered to site “flat packed” ready for simple assembly on site.



- Telescopic Box Section Struts with pinned connections.
- Base Panel Size L x H : 3000mm x 2000mm
- Top Panel Size L x H : 3000mm x 1000mm
- Panel Thickness : 60mm
- Clear Length Between Struts : 2620mm
- Clearance Below Lower Strut. : 920mm
- Maximum Lateral Earth Pressure : 22kN/m2

Internal Width (mm)	External Width (mm)	Base Box Weight (kg)	Top Extension Weight (kg)
1100 - 1500	1300 - 1700	4250	1590
1500 - 2100	1700 - 2300	4300	1630
2100 - 3300	2300 - 3500	4500	1710



Internal Width (mm)	External Width (mm)	Base Box Weight (kg)	Top Extension Weight (kg)
600 - 800	720 - 920	1258	752
800 - 1200	920 - 1320	1318	782
1150 - 1850	1270 - 1970	1375	810
1800 - 2500	1920 - 2620	1438	842
2450 - 3150	2570 - 3270	1502	874

Super Trench Box

The Super Trench Box provides an effective method of ground support when installing large diameter pipes in trenches up to 5.5 metres deep. They are delivered to site “flat packed” ready for site assembly.

- Telescopic Box Section Struts with pinned connections
- Base Panel Size L x H : 3500mm x 4000mm
- Top Panel Size L x H : 3500mm x 1500mm
- Panel Thickness : 100mm
- Clear Length Between Struts : 3000mm
- Clearance Below Lower Strut. : 2500mm
- Maximum Lateral Earth Pressure : 34kN/m2

Manhole Boxes

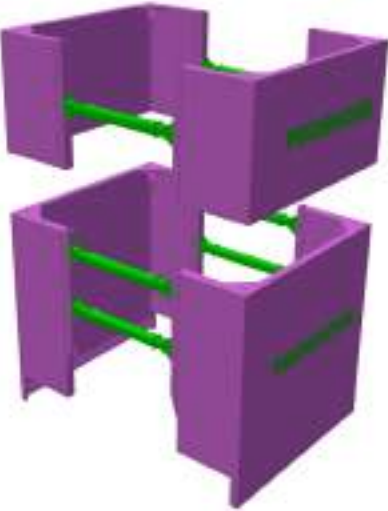
Light Duty Manhole Boxes

The Light Duty Manhole Box provides a quick and effective method of ground support for manhole excavations up to 3 metres deep when using a machine with limited lifting capacity. They can also be used for the installation of small tanks/vessels. Manhole boxes can be used as an alternative to trench sheets and hydraulic frames when the area is free from underground services.

- Lightweight Panel Construction
- Fixed Lengths Struts are supplied as standard
- Maximum Lateral Earth Pressure : 20kN/m2
- Top Extension Panels can be utilised for excavation depths up to 3 metres
- Clearance below the lower strut - 1250mm



External Manhole Box Size (m)	Internal Dimension (mm)	Length of Return (mm)	Base Height (m) Weight (kg)	Top Extension Height (m) Weight (kg)	Panel Thickness (mm)
2.5	2248	545	2 1004	1 556	60
3	2748	545	2 1100	1 614	60



Standard Manhole Boxes

The Standard Manhole box provides a quick and effective method of ground support for manhole excavations up to 5.5 metres deep. They can also be used for the installation of smaller tanks/vessels. Manhole boxes can be used as an alternative to trench sheets and hydraulic frames when the area is free from underground services.

- Fixed Lengths Struts are supplied as standard.
- Telescopic Box Section Struts can also be supplied upon request.
- Clearance below the lower strut 1500m.
- Maximum Lateral Earth Pressure : 40kN/m2
- Top Extension Panels can be utilised for the required depth.

External Manhole Box Size (m)	Internal Dimension (mm)	Length Of Return (mm)	Base		Top Extension		Return/ Panel Thickness (mm)		Box Strut Lengths (mm)
			Height (m)	Weight (t)	Height (m)	Weight (t)			
2.0	1870	530	2.0	1.3	1.00	0.52	60	60	940
2.5	2180	600	2.5	2.35	1.5	1.25	160	100	1340
3.0	2680	600	2.5	2.65	1.5	1.50	160	100	1840
3.5	3300	600	2.5	3.00	1.5	2.10	100	100	2340
4.0	3760	930	2.5	3.56	1.5	2.50	120	100	2140
4.7	4460	930	2.5	3.8	1.5	2.66	120	100	2840



Manhole Shutters

The Pro Shore manhole shutter provides a quick and effective method of constructing circular formwork. It is primarily used to create a uniform concrete surround around pre cast concrete manhole rings.

- 3 Differing Panel Sizes for ease of construction
- Captive Pin and Wedge System
- Lifting points on all sizes
- One standard height of 1800mm
- Widths A:1530mm B:620mm C:250mm

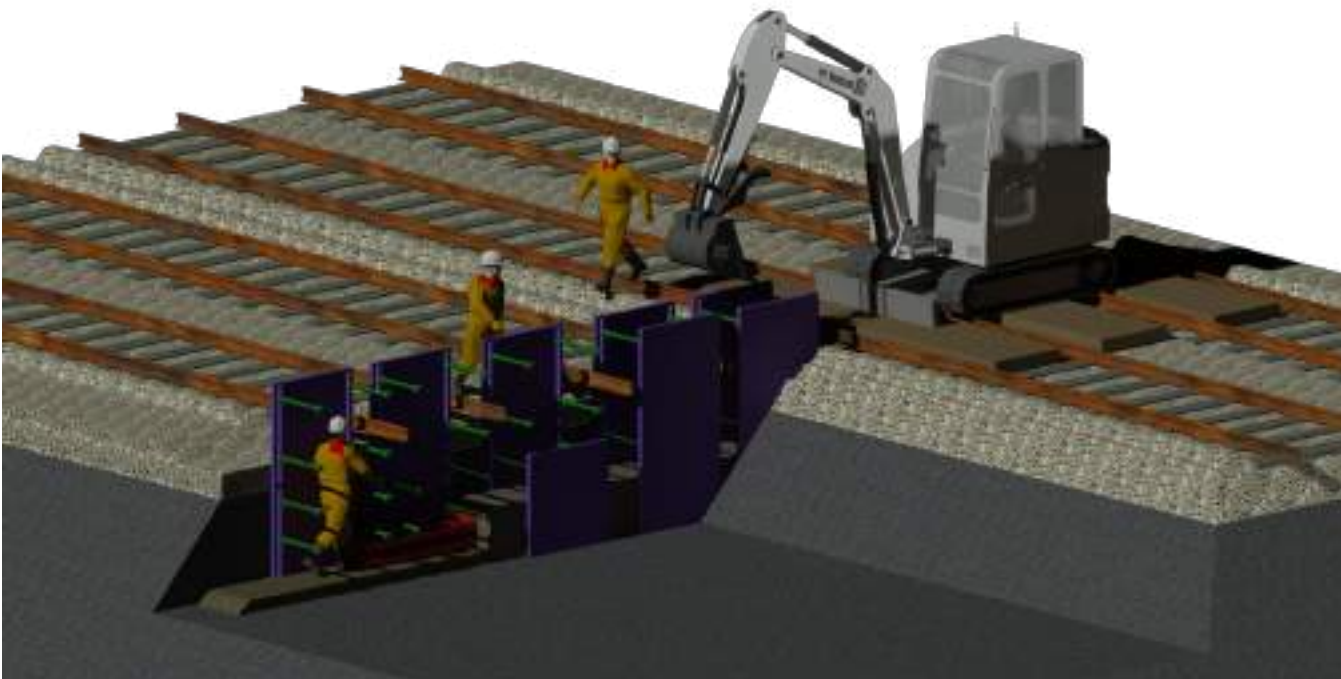
“X” Nominal Internal Diameter of Manhole (mm)	“Y” Thickness (mm)	Number Of Sections Req’			“Z” External Diameter of Concrete (mm)	Theoretical Thickness of Concrete (mm)	Volume of Concrete Surround (m³)
		A	B	C			
675	65	2	1	0	1171	183	1.02
900	75	2	2	0	1368	159	1.09
1050	85	3	0	1	1541	160	1.25
1200	100	3	1	1	1738	169	1.5
1350	112	3	2	0	1855	141	1.36
1500	115	4	0	1	2028	150	1.58
1800	115	4	2	0	2342	156	1.93
2100	120	5	1	1	2712	186	2.66
2400	135	6	0	1	3002	166	2.66
2700	162	6	2	1	3396	186	3.38
3000	210	7	2	0	3800	190	3.89



Utility Boxes

The Pro Shore Utility Box is a quick, easy and effective way of providing trench security for smaller excavations. Utilising 1200mm x 1200mm aluminium panels, it is an extremely versatile system and has a high strength to weight ratio.

- Lightweight small panels offer easy handling
- Easy to construct
- Ideal for tight/small excavations
- 1200 x 1200 panel size



Strut Type	Internal Width	External Width
Size 1	0.47m - 0.69m	0.57m - 0.79m
Size 2	0.69m - 1.09m	0.79m - 1.19m
Size 3	1.02m - 1.68m	1.12m - 1.78m

Drag Boxes

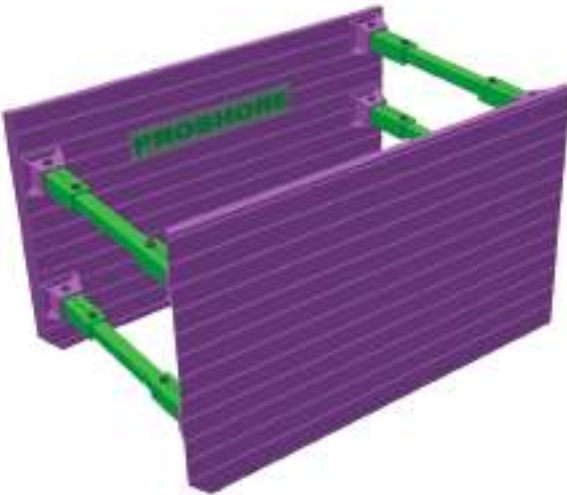
5m x 2.4m Drag Box

The 5m x 2.4m Drag Box is designed to act as a shield for pipe laying gangs when working in self-supporting ground. The length of the panels facilitate a high level of productivity. They are usually delivered to site “flat packed” ready for simple assembly on site.

- Telescopic Box Section Struts with pinned connections
- Base Panel Size L x H : 5000mm x 2400mm
- Top Panel Size L x H : 5000mm x 1800mm
- Panel Thickness : 100mm
- Clear Length Between Struts : 4220mm
- Clearance Below Lower Strut. : 1372mm
- Maximum Lateral Earth Pressure : 40kN/m2



Strut Type	Internal Width (mm)		External Width (mm)		Base Box Weight (kg)	Top Extension Weight (kg)
	Min	Max	Min	Max		
Fixed	600	600	800	800	2874	2278
Fixed	750	750	950	950	2890	2294
Fixed	900	900	1100	1100	2938	2342
Telescopic	1000	1300	1200	1500	3074	2478
Telescopic	1400	1800	1600	2000	3221	2625
Telescopic	1900	2600	2100	2800	3453	2857
Telescopic	2700	3000	2900	3200	3620	3025



7m x 2.4m Drag Boxes

The 7m x 2.4m Drag Box is designed to act as a shield for pipe laying gangs when working in self-supporting ground. The length of the panels facilitate a high level of productivity. They are usually delivered to site “flat packed” ready for simple assembly on site.

- Telescopic Box Section Struts with pinned connections
 - Base Panel Size L x H : 7000mm x 2400mm
 - Panel Thickness : 100mm
- Clear Length Between Struts : 6620mm
 - Clearance Below Lower Strut. : 1500mm
 - Maximum Lateral Earth Pressure : 20kN/m2

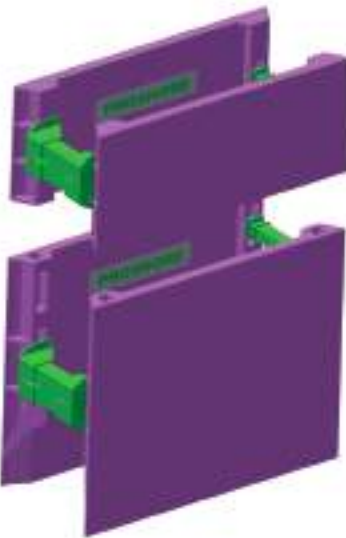


Strut Type	Internal Width (mm)		External Width (mm)		Base Box Weight (kg)
	Min	Max	Min	Max	
Fixed	600	600	800	800	4486
Fixed	750	750	950	950	4502
Fixed	900	900	1100	1100	4550
Telescopic	1000	1300	1200	1500	4686
Telescopic	1400	1800	1600	2000	4833
Telescopic	1900	2600	2100	2800	5065
Telescopic	2700	3000	2900	3200	5233

Drag Boxes

The Drag Box is designed to act as a shield for pipe laying gangs when working in self-supporting ground. They can be used in up to 3m deep trenches by adding a top extension box to the base box. They are usually delivered to site ready assembled.

- Telescopic Box Section Struts with pinned connections
 - Base Panel Size L x H : 3000mm / 5000mm x 2000mm
 - Top Panel Size L x H : 3000mm / 5000mm x 1000mm
 - Panel Thickness : 64mm (3m Box) / 100mm (5m Box)
 - Clear Length Between Struts : 2830mm (3m Box) / 4830mm (5m Box)
- Clearance Below Rear Lower Strut. : 1200mm
 - Maximum Lateral Earth Pressure : 20kN/m2
 - 3 metre Drag Box is ideal for use with a small excavator with limited lifting capacity



3m x 2m Drag Box

Internal Width (mm)		External Width (mm)		Base Box Weight (kg)	Top Extension Weight (kg)
Min	Max	Min	Max		
550	750	680	880	1286	709
800	1150	930	1280	1321	734
1150	1500	1280	1630	1349	897
1500	1850	1630	1980	1374	920
1850	2200	1980	2330	1403	944
2200	2550	2330	2680	1434	970

5m x 2m Metre Box

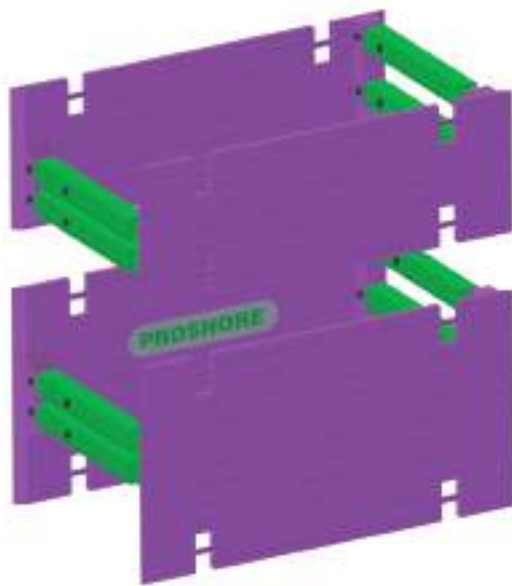
Internal Width (mm)		External Width (mm)		Base Box Weight (kg)	Top Extension Weight (kg)
Min	Max	Min	Max		
550	750	750	950	2280	1150
800	1150	1000	1350	2315	1185
1150	1500	1350	1700	2345	1211
1500	1850	1700	2050	2375	1237
1850	2200	2050	2400	2405	1263
2200	2550	2400	2750	2435	1289

5.1m x 3m High Clearance Drag box

The 5.1m x 3m High Clearance Drag box is designed to act as a shield for pipe laying gangs when working in self-supporting ground. The length of the panels facilitate a high level of productivity. They are usually delivered to site “flat packed” ready for simple assembly on site.

- Telescopic Box Section Struts with pinned connections
 - Base Panel Size L x H : 5100mm x 3000mm
 - Top Panel Size L x H : 5100mm x 2000mm
 - Panel Thickness : 100mm
- Clear Length Between Struts : 4500mm
 - Clearance Below Rear Lower Strut. : 2080mm
 - Maximum Lateral Earth Pressure : 25kN/m2

Strut Type	Internal Width (mm)		External Width (mm)		Base Box Weight (kg)	Top Extension Weight (kg)
	Min	Max	Min	Max		
Fixed	870	870	1070	1070	3432	2712
Telescopic	1200	1500	1400	1700	4270	2870
Telescopic	1500	2100	1700	2300	4462	3062
Telescopic	2100	3300	2300	3500	4844	3444



Pipe Stoppers

Our Multi-Test Pipe Stoppers are manufactured to fit a range of sizes and are designed to carry out air tests on pipe diameters from 300mm internal to 1050mm internal.

Range (mm)	Max inflation pressure (bar)	Max pressure in pipeline (bar)	Working pipe diameter (mm)
300-400	1.5	0.5	300-400
400-500	1.5	0.5	400-500
500-600	1.5	0,5	500-600
600-700	1.5	0.5	600-700
700-800	1.5	0.5	700-800
800-900	1.5	0.5	800-900
900-1050	1.5	0.5	900-1050



Stop End Panels

Allows closure of the open end of a trench to provide support and prevent dislodgement of loose material.

- Trench/Manhole Box closure panel
- Various Panel Sizes Available.
- 100mm thick panels to enable deeper uses.
- Safely retains backfill material
- Prevents unauthorised access
- Lifting points built in for safety
- Designed to safely support vertical soil where it is not possible to batter the soil back.



Road Forms

Road Forms provide a quick and simple solution for concrete shuttering, typically for the forming of kerb racing and concrete slabs.

- Steel construction
- Supplied in 3 metre lengths
- Available in both Square Edge (Rigid) & Flexible
- Available in 150mm, 200mm & 300mm depths



Pipe Lifter

The Probst RVD Pipe Lifter is a safer and easier alternative to outmoded methods of lifting concrete pipes. It is designed so lift and place concrete pipes from 300mm to 1200mm diameter.

- New: It is possible to mount an additional rotator or tilt rotator. This makes it even more flexible.
- Revised, compact design.
- Mandrel with plastic plate on the underside to gently push the pipe into the correct gap after installation.
- Increased working load limit.
- Easier pipe handling in the trench lining thanks to an optimised mandrel (compact dimensions).
- With fork sleeves for transportation with fork arms.



Pipe Pusher

- Eliminates manual handling of heavy timber buffers
- Reduces risk of accidents
- Reduces time in trench
- Easy quick hitch system
- Faster installation
- Tighter and more controllable joint gaps
- Can use the full force of the excavator without fear of something breaking or being damaged.



Manhole Ring Lifter

Manhole Ring lifters are easily adjustable for the easy movement of Manhole Rings up to 2500kg. The manhole rings can be moved and placed by the machine operator, making this a one person operation.



- Ideal for unloading flatbed vehicles where access is not allowed. Satisfying JHSE policy of Fall prevention/protection
- Single Person Operation reduces the need for additional personnel involvement
- High Capacity easily adjustable grab for lifting manhole rings up to 2500kg in weight
- Flexible Size Adjustment will accommodate ring sizes from 900mm to 1500mm diameter*
- Freely-Suspended from the machine, or loader, allows quick mobilisation

Culvert Puller

The WiMAG RZE-16 Culvert Puller is used for the safe and fast joining of reinforced concrete circular pipes and box culverts from 800mm to 2500mm internal. Unlike many other culvert pullers on the market, the RZE-16 can be positioned at ANY point within the pipe / culvert and not just at the joint.

- Battery operated so no hazardous trailing cables
- Single push button control of both tensioning & pulling operations via hydraulic cylinders
- Pulling operation via polyester round sling reducing the risk of personal injury
- Can be positioned & tensioned at ANY point within the pipe and not just at the joints
- Easy & quick movement on 4 wheels along the pipe/culvert
- Simple height adjustment via threaded spindle
- Large clamping surfaces prevent damage to inside wall of the pipe/culvert
- Maximum pulling force 16 tonnes
- Suitable for pipes & box culverts from 800mm to 2500mm internal



Road Plates

Road Plates provide a simple solution when vehicle or plant access is required across an open trench or other opening in the ground.

- 19mm thick steel plate
- Available in both standard & anti-skid finish
- Available in 2400mm x 1200mm & 1800mm x 1200mm sizes

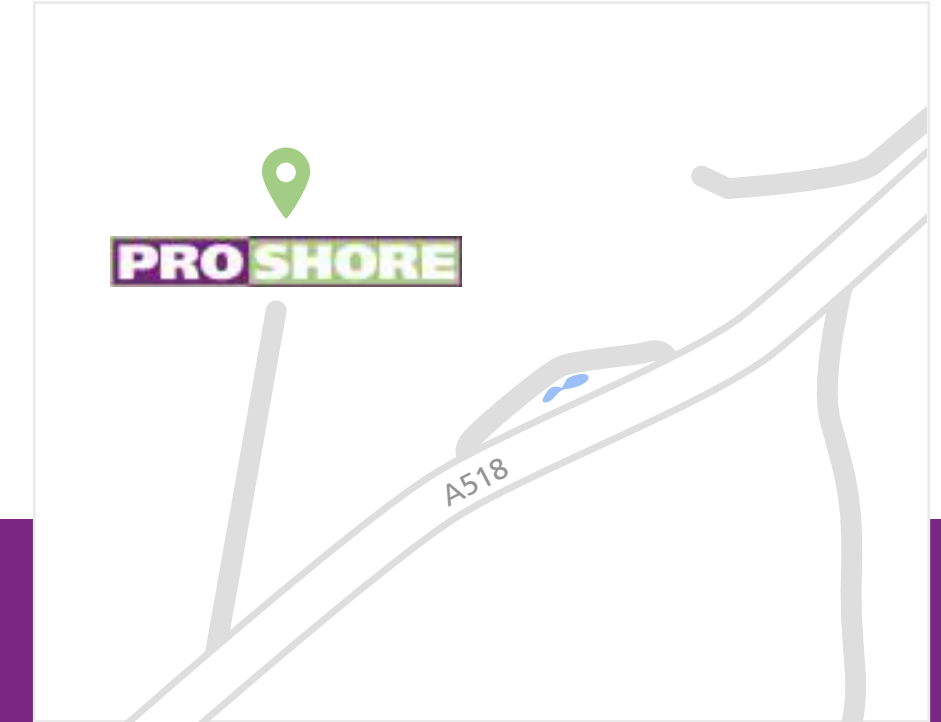


Our Locations



Northern Depot
01924 274182

Bridge Works, Wakefield Road, Ossett, WF5 9AW



Midlands Depot
01889 500746

Grindley Business Village, Grindley Ln, Stafford ST18 0LR

Paperwork - Simple, clear & concise paperwork process from quotation through to final invoice.

Step 1

Hire Estimate

Our quotations are kept as clear & simple as possible and contain only the relevant & important information required at this stage.

BRIDGE WORKS
MILNER WAY
OSSETT
WAKEFIELD
WF5 5AW
Telephone: 0845 003 8984
Email: enquiries@proshore.co.uk

PRO SHORE

Roy Scott - Sales Manager - 07818 596261
roy.scott@proshore.co.uk

Hire Estimate

Account No: ANY01

ANY CUSTOMER
ANY ROAD
ANY TOWN
ANY COUNTY

Estimate No. 000003120
Delivery Date 10 Jan 2017
Their Ref. 1234 / 2017
Ordered By PLANT MANAGER

Hire Items Type	2 W	Minimum 2 Week Hire Applies						
Item Number	Description	Quantity	Week	Subs Price	Disc. %	Linn. Total		
0020-0010-010	Standard Trench Box Base 600-800mm	1	50.00	10.00		110.00		
0020-0020-010	Standard Trench Box Top Ext'n 600-800mm	1	30.00	6.00		66.00		
0030-0010-030	3m Manhole Box Base	1	95.00	19.00		209.00		
0030-0020-030	3m Manhole Box Top Extension	1	50.00	10.00		110.00		
Transport Charges								
DELIVERY CHARGE		1				75.00		

Delivered To:

ANY CONSTRUCTION SITE
ANY ROAD
ANY TOWN
ANY COUNTY

Goods Total 570.00
VAT Total 114.00
Total 684.00
**** THIS IS NOT A VAT INVOICE ****

TRENCH BOXES * MANHOLE SHUTTERS * MANHOLE BRACE FRAMES * TRENCH SHEETS * ROAD PLATES
TRENCH STRUTS * POLE LADDERS * TRENCH ROLLERS * PIPE LASERS * PIPE PULLERS
VAT Reg No 930 1527 56 * Pro-Shore Ltd * Registered No. 645 7536

Step 2

Delivery Note

Our delivery notes are simple & understandable yet contain the right level of detail that sites require including detailing kit components such as trench box panels, trench box struts & connecting pins.

BRIDGE WORKS
MILNER WAY
OSSETT
WAKEFIELD
WF5 5AW
Telephone: 0845 003 8984
Email: enquiries@proshore.co.uk

PRO SHORE

DELIVERY NOTE

Contract No. 000003120

Customer: ANY01

ANY CUSTOMER
ANY ROAD
ANY TOWN
ANY COUNTY

Site Address: ANY CONSTRUCTION SITE
ANY ROAD
ANY TOWN
ANY COUNTY

Order No: 1234 / 2017
Date: 10/01/2017
Site Contact: SITE FOREMAN
Telephone No: 01111 555555

Item Number	Description	Quantity	Item Weight
Hire Items			
0020-0010-010	Standard Trench Box Base 600-800mm	1	0.00
Accessories/Safety Equipment for 0020-0010-010			
0020-0200-010	Standard Trench Box Base Panel 3.5m x 2.5m	2	2,052.00
0020-0210-010	Trench Box Strut 600-800mm	4	140.00
0020-0220-030	40mm x 220mm Pin & R Clip	8	16.00
0020-0220-050	28mm x 180mm Pin & R Clip	4	4.00
0030-0010-030	Standard Trench Box Top Ext'n 600-800mm	1	0.00
Accessories/Safety Equipment for 0030-0010-030			
0020-0200-030	Standard Trench Box Top Ext'n Panel 3.5m x 1.5m	2	1,410.00
0020-0210-030	Trench Box Strut 600-800mm	2	70.00
0020-0220-010	Standard Trench Box Base to Top Connector	4	26.00
0020-0220-030	40mm x 220mm Pin & R Clip	8	16.00
0020-0220-050	28mm x 180mm Pin & R Clip	2	2.00
0020-0220-070	35mm x 200mm Pin - Captive	4	4.00
0030-0010-030	3m Manhole Box Base	1	0.00
Accessories/Safety Equipment for 0030-0010-030			
0020-0220-030	40mm x 220mm Pin & R Clip	8	16.00
0020-0220-030	3m Manhole Box Base Panel x 2.5m High	2	2,412.00
0030-0220-030	3m Manhole Box Strut - 1840mm	4	220.00

Arrival Time : Waiting Time : Departure Time :

I confirm receipt of the equipment. As Hirer I understand the correct operation of the system. I certify that I have received operating instructions in the installation of the equipment and confirm that it will be installed safely.

Drivers Signature: _____ Customers Signature _____

Vehicle Registration: _____ Customers Name _____

Date: _____ Date: _____

ALL GOODS ARE HIRED UNDER MODEL CODE CONSTRUCTION PLANT HIRE ASSOCIATION (CPA) CONDITIONS A COPY OF WHICH ARE AVAILABLE UPON REQUEST

TRENCH BOXES * MANHOLE SHUTTERS * MANHOLE BRACE FRAMES * TRENCH SHEETS * ROAD PLATES
TRENCH STRUTS * POLE LADDERS * TRENCH ROLLERS * PIPE LASERS * PIPE PULLERS
VAT Reg No 930 1527 56 * Pro-Shore Ltd * Registered No. 645 7536

Step 3

Off-Hire Note

Upon equipment being returned from hire, it is assessed for both quantity and quality. We then produce an off-hire note which details exactly what has been returned and notes any damages and/or losses in a clear and understandable way. Important information such as site address, your reference/order number and off hire date are included on the off-hire note. We can either email or post a copy to you.

BRIDGE WORKS
MILNER WAY
OSSETT
WAKEFIELD
WF5 5AW
Telephone: 0845 003 8984
Email: enquiries@proshore.co.uk

PRO SHORE

Off-Hire Note

Account No: ANY01

ANY CUSTOMER
ANY ROAD
ANY TOWN
ANY COUNTY

Off-Hire No: 7093
Off-Hire Date: 31/01/2017
Order No: 1234 / 2017
Ordered By: PLANT MANAGER
Contract No: 000003120

Item Number	Description	Quantity	Qty	Quantity Damaged	Quantity Lost
0020-0010-010	Standard Trench Box Base 600-800mm	1.00			
0020-0200-010	Standard Trench Box Base Panel 3.5m x 2.5m	2.00			
0020-0210-010	Trench Box Strut 600-800mm	4.00			
0020-0220-030	40mm x 220mm Pin & R Clip	8.00			
0020-0220-050	28mm x 180mm Pin & R Clip	4.00			
0020-0020-010	Standard Trench Box Top Ext'n 600-800mm	1.00			
0020-0200-030	Standard Trench Box Top Ext'n Panel 3.5m x 1.5m	2.00			
0020-0210-010	Trench Box Strut 600-800mm	2.00			
0020-0220-010	Standard Trench Box Base to Top Connector	4.00			
0020-0220-030	40mm x 220mm Pin & R Clip	8.00			
0020-0220-050	28mm x 180mm Pin & R Clip	2.00			
0020-0220-070	35mm x 200mm Pin - Captive	4.00			
0030-0010-030	3m Manhole Box Base	1.00			
0020-0220-030	40mm x 220mm Pin & R Clip	8.00			
0030-0200-030	3m Manhole Box Base Panel x 2.5m High	2.00			
0030-0220-030	3m Manhole Box Strut - 1840mm	4.00			
0030-0020-030	3m Manhole Box Top Extension	1.00			
0020-0220-010	Standard Trench Box Base to Top Connector	4.00			
0020-0220-030	40mm x 220mm Pin & R Clip	8.00			
0020-0220-070	35mm x 200mm Pin - Captive	4.00			
0030-0210-030	3m Manhole Box Top Ext'n Panel x 1.5m High	2.00			
0030-0220-030	3m Manhole Box Strut - 1840mm	2.00			

Site Address:

ANY CONSTRUCTION SITE
ANY ROAD
ANY TOWN
ANY COUNTY

Signed: _____
Printed: _____
Date: _____

Step 4

Invoice

We keep our invoices as simple and concise as possible and, unlike some of our competitors, we strip away all unnecessary information such as listing non-chargeable kit components so that only the most important & relevant details are shown on the invoice. This will save your accounts staff lots of valuable time which would otherwise be spent trying to decipher more complicated & cluttered invoices.

BRIDGE WORKS
MILNER WAY
OSSETT
WAKEFIELD
WF5 5AW
Telephone: 0845 003 8984
Email: enquiries@proshore.co.uk

PRO SHORE

Hire Invoice

Account No: ANY01

ANY CUSTOMER
ANY ROAD
ANY TOWN
ANY COUNTY

Invoice No. 17156
Invoice Date 31 Jan 2017
Customer Ref. 1234 / 2017
Ordered By PLANT MANAGER
Contract No. 000003120

Item Description	Qty	Weeks /Days	Selling Price/ Weekly rate (£)	Hire Period	Item Status	Total Charge (£)
Items						
Standard Trench Box Base 600-800mm	1	3	1	10/01/2017 - 31/01/2017	QHM	160.00
Standard Trench Box Top Ext'n 600-800mm	1	3	1	10/01/2017 - 31/01/2017	QHM	96.00
3m Manhole Box Base	1	3	1	10/01/2017 - 31/01/2017	QHM	304.00
3m Manhole Box Top Extension	1	3	1	10/01/2017 - 31/01/2017	QHM	160.00
DELIVERY CHARGE						75.00
COLLECTION CHARGE						75.00

Goods

Rate

Goods

VAT

Subtotal

1

20.00 %

876.00

174.00

ANY CONSTRUCTION SITE
ANY ROAD
ANY TOWN
ANY COUNTY

Goods Total £ 870.00
VAT Total £ 174.00
Invoice Total £ 1,044.00

PAYMENT BY BACS: Pro-Shore Ltd. A/C NO: 72888301 SORT CODE: 40-51-43
GOODS SOLD REMAIN THE PROPERTY OF PRO-SHORE LTD UNTIL PAYMENT IS RECEIVED IN FULL
Payment Terms: STRICTLY 30 DAYS FROM DATE OF INVOICE
Any queries regarding this invoice must be made within 10 days to our Head Office.
All goods are hired under model code construction plant hire association (CPA) conditions, a copy of which is available upon request.

VAT Reg No 930 1527 56 * Pro-Shore Ltd * Registered No. 645 7536



Head Office
0845 003 8984

www.proshore.co.uk

Opening Hours: Contact us 24 Hours a day, 7 days a week.

Pro Shore can offer our full range of shoring and ancillary equipment to customers throughout the UK. If you would like more information about our products and services, please give us a call. Alternatively for more information visit our website.